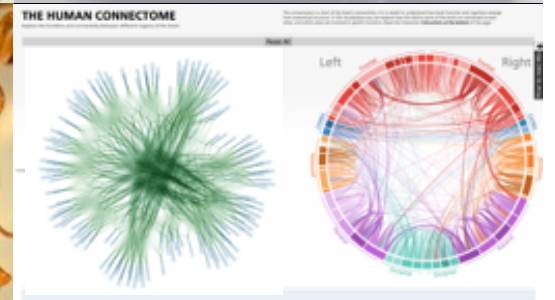
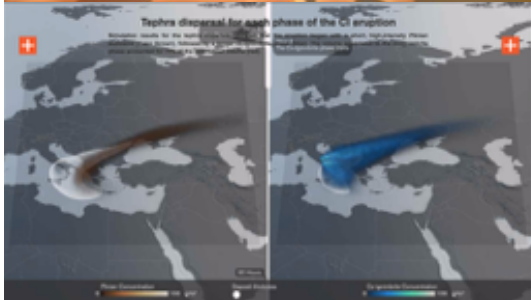
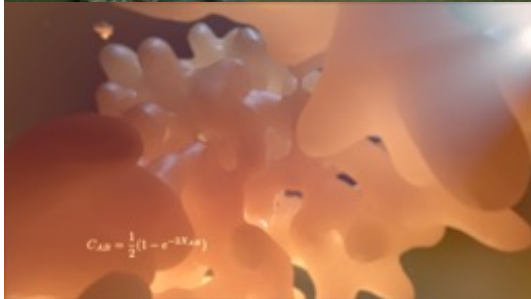
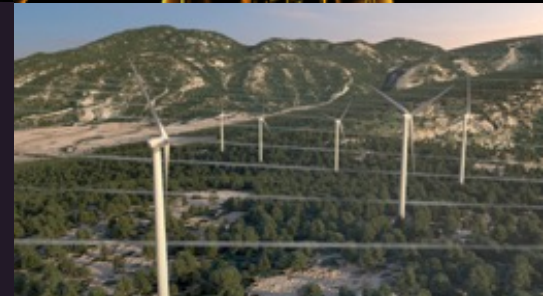
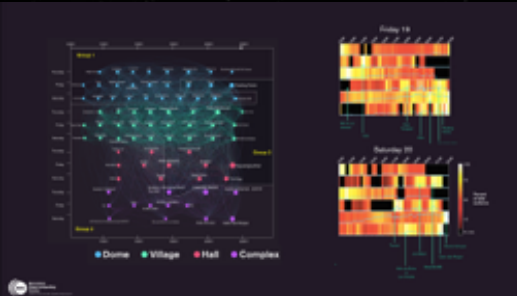
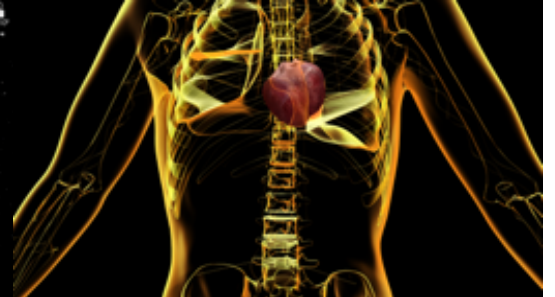
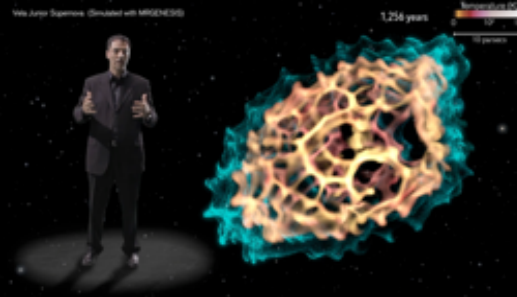
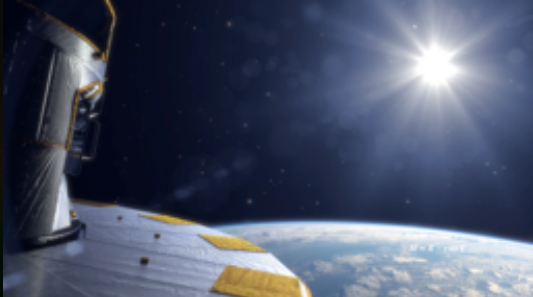


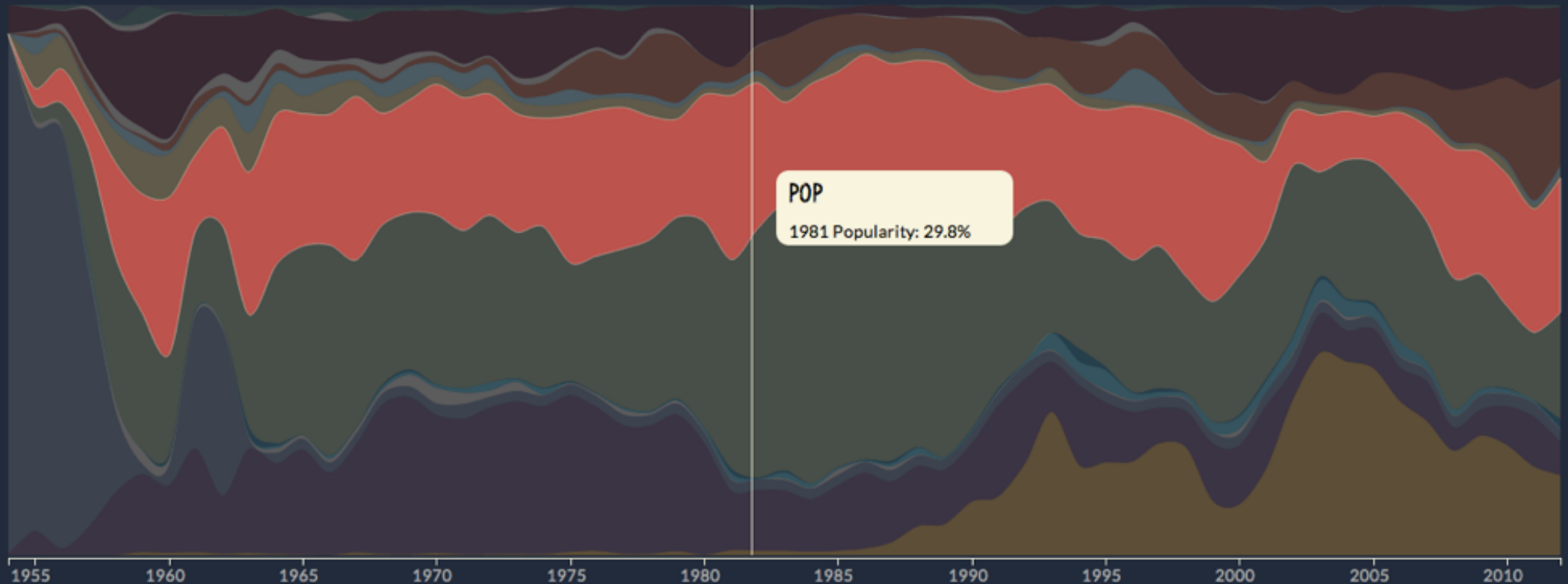
Data Analytics and Visualization



**Barcelona
Supercomputing
Center**
Centro Nacional de Supercomputación



POPULARITY OF THE TOP MUSIC GENRES.
DOUBLE CLICK TO SEE MORE



Data extracted from
60 years of weekly
Billboard rankings
(35K songs)

Data by percent of
total industry sales or
by dollar amount

Songs aggregated by
main genre and
subgenre (interactive)

Click, drag, double click,
play with the controls.



ALL RESET

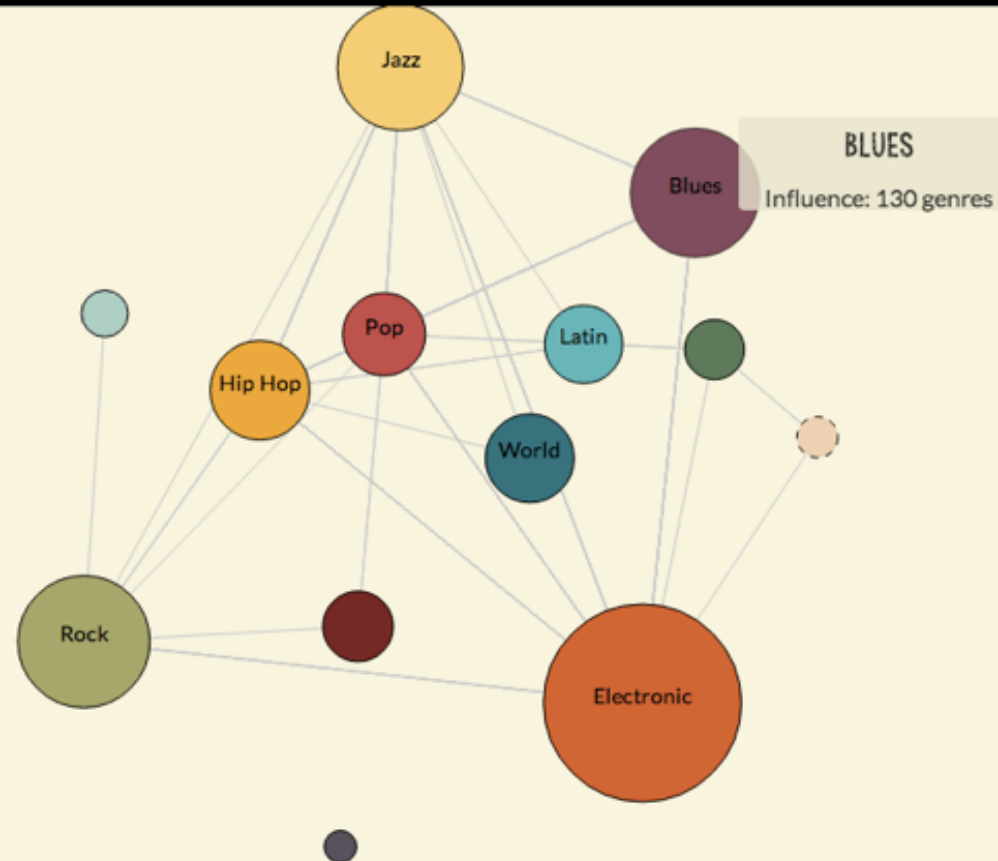
ATTRACTION



SIZE



SIZE BY: INFLUENCE



○ Folk
○ Blues
○ Jazz
○ Classical
○ Country
○ Latin
○ Pop
○ Comedy
○ Easy Listening
○ World
○ Rock
○ Electronic
○ Hip Hop

Genre and subgenre
relationships extracted
from Wikipedia

Over 800 genres in an
exploratory interactive

Presented at Sonar 2014
Shortlisted at Information is
Beautiful Awards 2014



WE KNOW

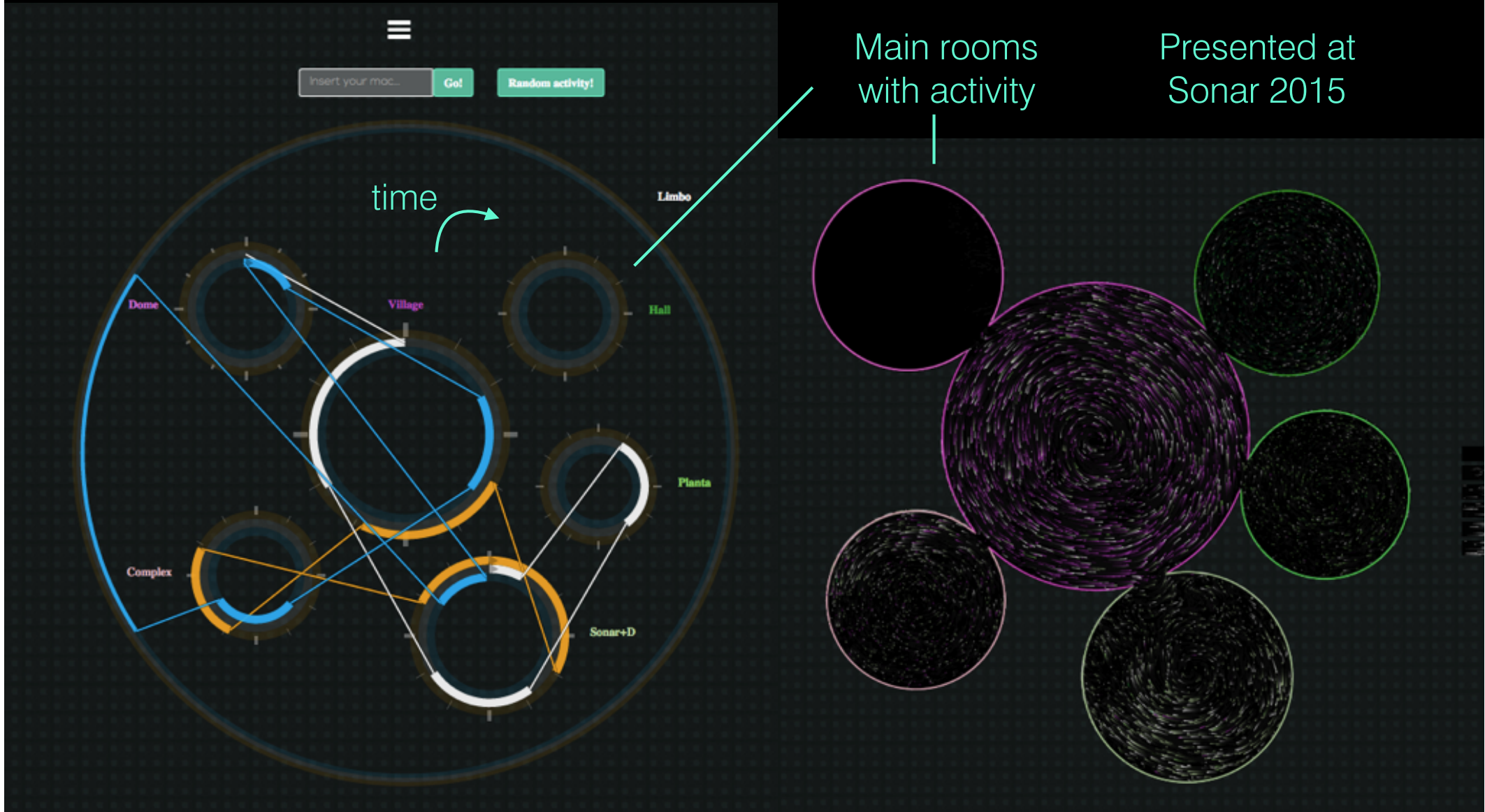
what **you** did last s3nar

www.bsc.es/viz/whatyoudid

We sensorized the Fira de Montjuic with mobile phone trackers(cheap)



100K people in three days (40% detection)



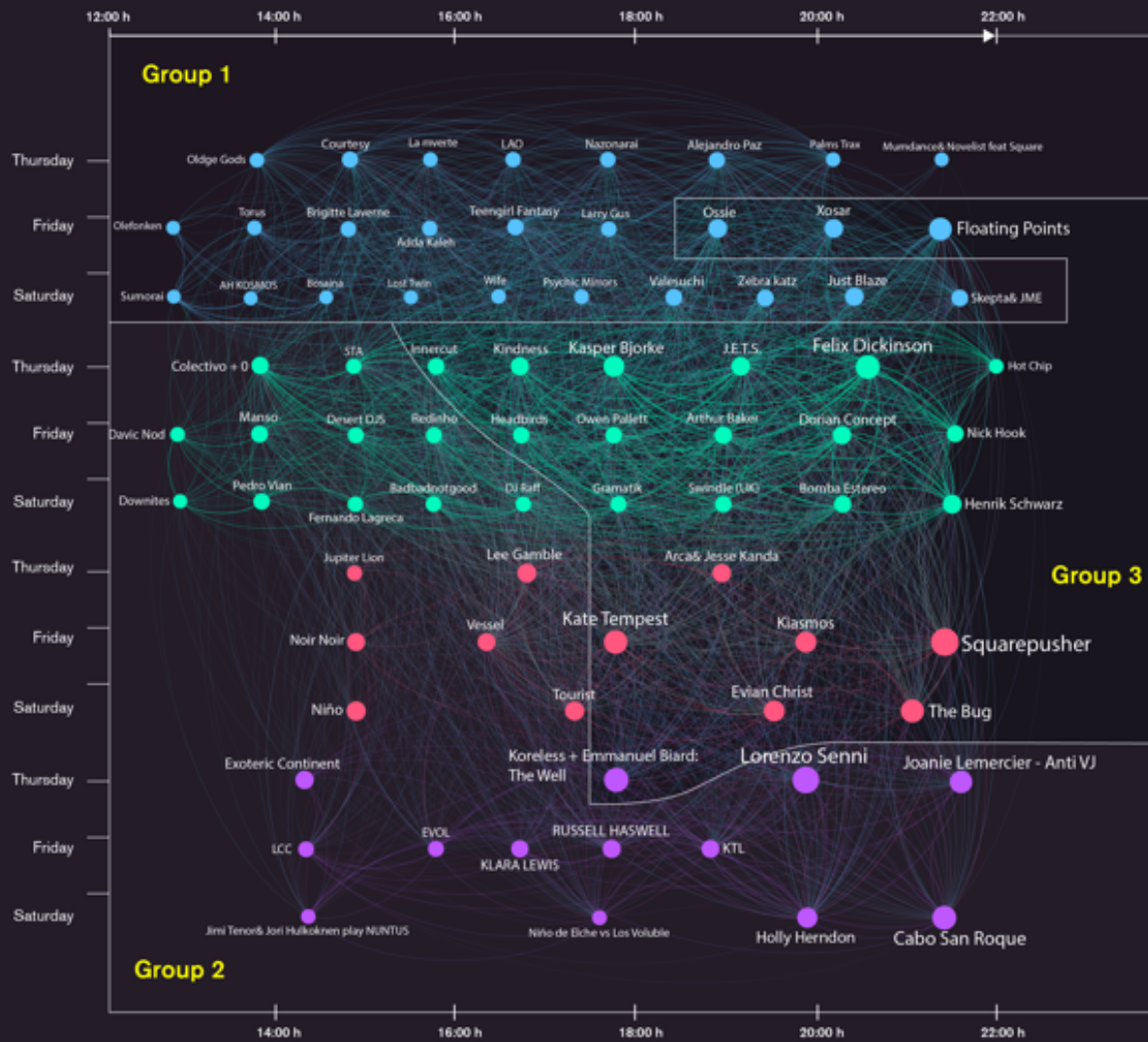
Presented at Sonar 2015

WE KNOW

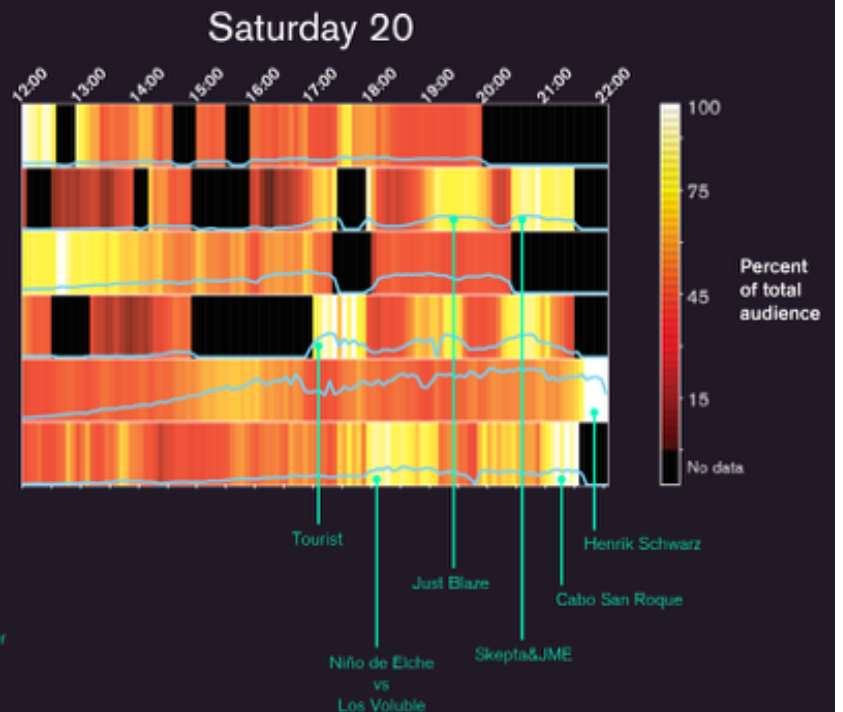
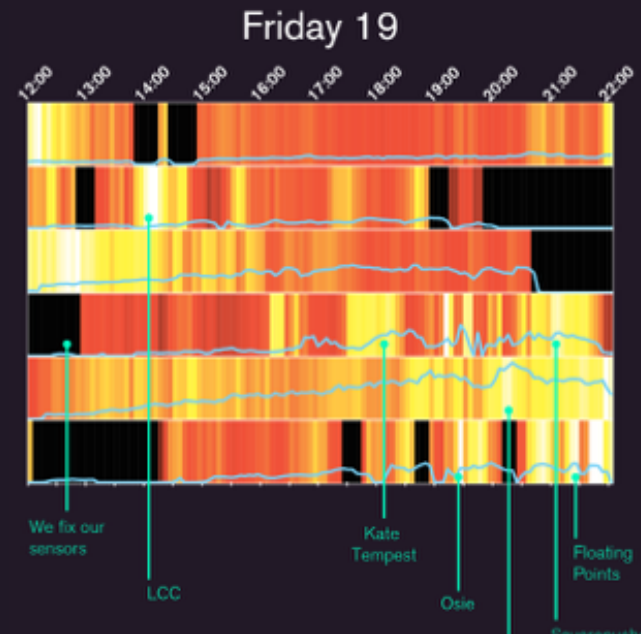
what you did last sónar

Analysis of behaviour revealed hidden successes and music communities

www.bsc.es/viz/whatyoudid



● Dome ● Village ● Hall ● Complex



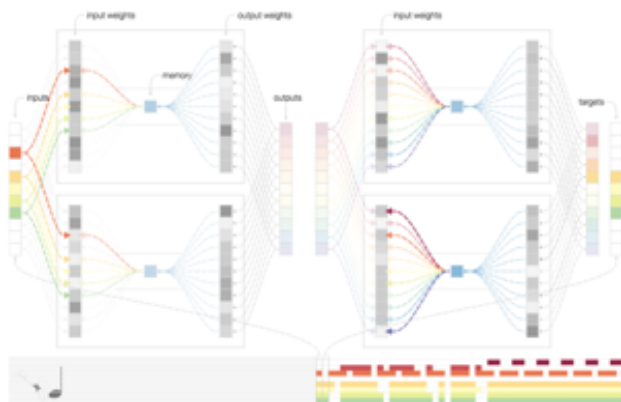
ALGORITMO

Can artificial intelligences make music?

The difficulty is subjectivity



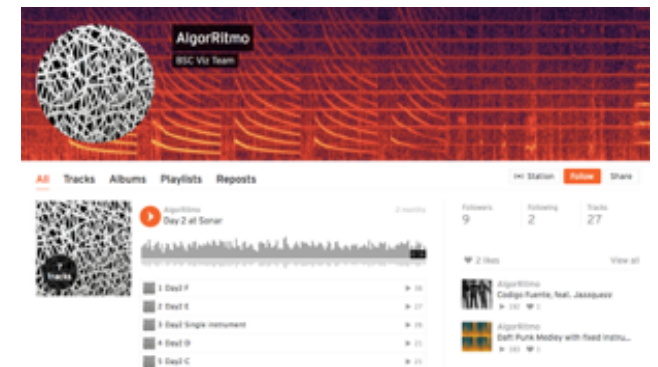
We need human support



Technology:
Recurrent neural networks



People at Sonar 2016
voted songs created by
Minotauro, and the
algorithm improved using
this feedback



Music available at
<https://soundcloud.com/bsc-viz-team>

LO LLULL ELECTRIC

@LOLLULLELECTRIC

Una intel·ligència artificial
que escriu com Ramon Lull





Ramon Llull

@lollullelectric

bsc.es/viz/llull

Joined September 2016

Born on December 12, 1896

TWEETS 1,279 FOLLOWING 2 FOLLOWERS 30 LIKES 1 MOMENTS 0

Edit profile

Tweets Tweets & replies



Ramon Llull @lollullelectric · 16m

ada en lo món e els meus massa e tots los
mals e de les virtuts e les vils e els prínceps
de les sensualitats qui

Diari ARA @diariARA
Recull de portades: "Inquietud mundial pel resultat electoral als Estats
Units", portada d'"El País"
ara.cat/especials/port...



Ramon Llull @lollullelectric · 41m

ma sensualment de fets amadors de l'asla
en aquella qui hagués defalliment. e pare e
de per aurada e turmentació

Who to follow · Refresh · View all

- Xavier Fonollosa @xavifono Follow
- IEMed @IEMed_ Follow
- Ed_proa @Ed_proa Follow

Find friends

Trends · Change

- #FelizJueves 7,947 Tweets
- #LaCafeteraNoOlvidamosrak 1,955 Tweets
- #paro 1,240 Tweets

CCCB / Actividades

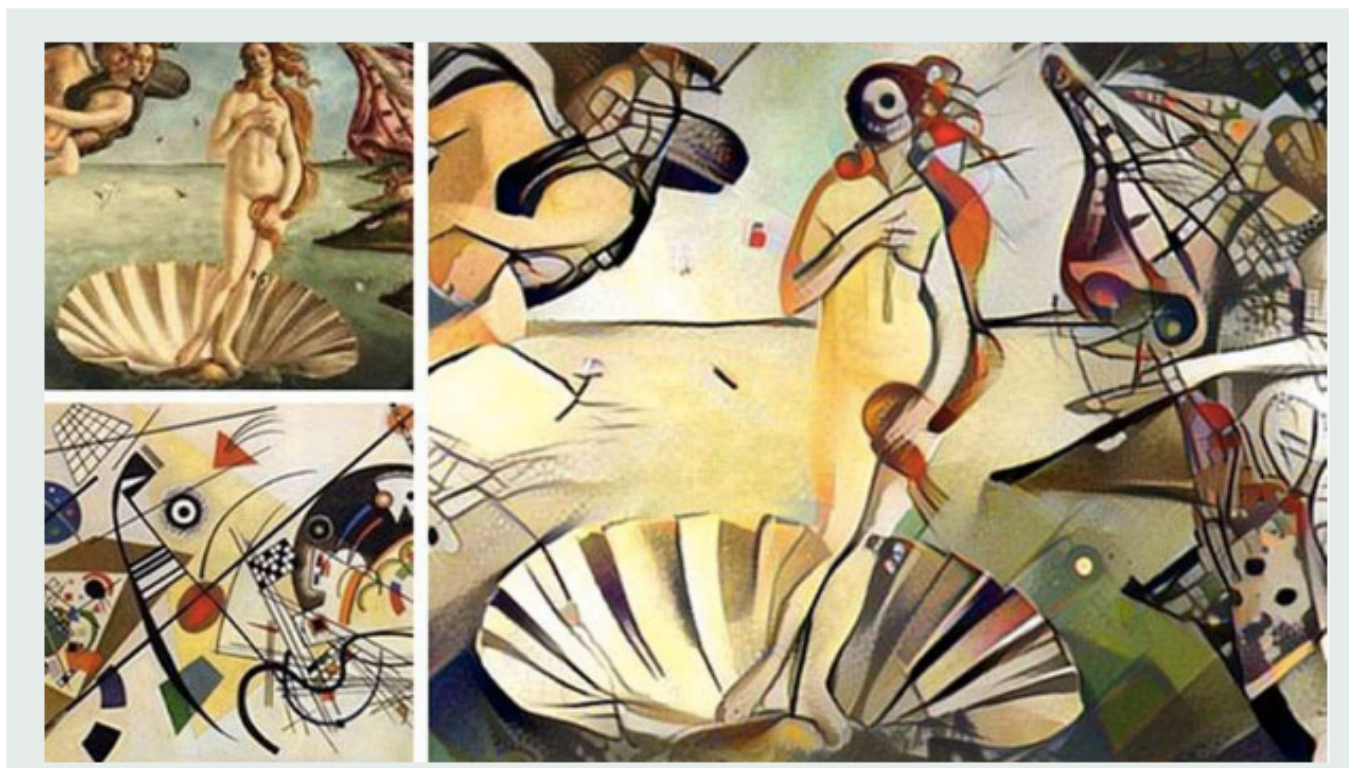
¿Que piensan las máquinas?

Taller de escritura con inteligencia artificial a cargo de Fernando Cucchietti y Artur García

[La máquina de pensar](#)

5 noviembre 2016

Haremos una inteligencia artificial que comente la actualidad en el estilo de escritura de Ramón Llull



CURSOS Y TALLERES
INNOVACIÓN
LITERATURA
TECNOLOGÍA

Horario

5 noviembre 2016
11.00 - 14.00

[Añadir al calendario](#)

Precio

Entrada libre

Inscripciones

Inscripciones *online*

Aforo: 25 personas

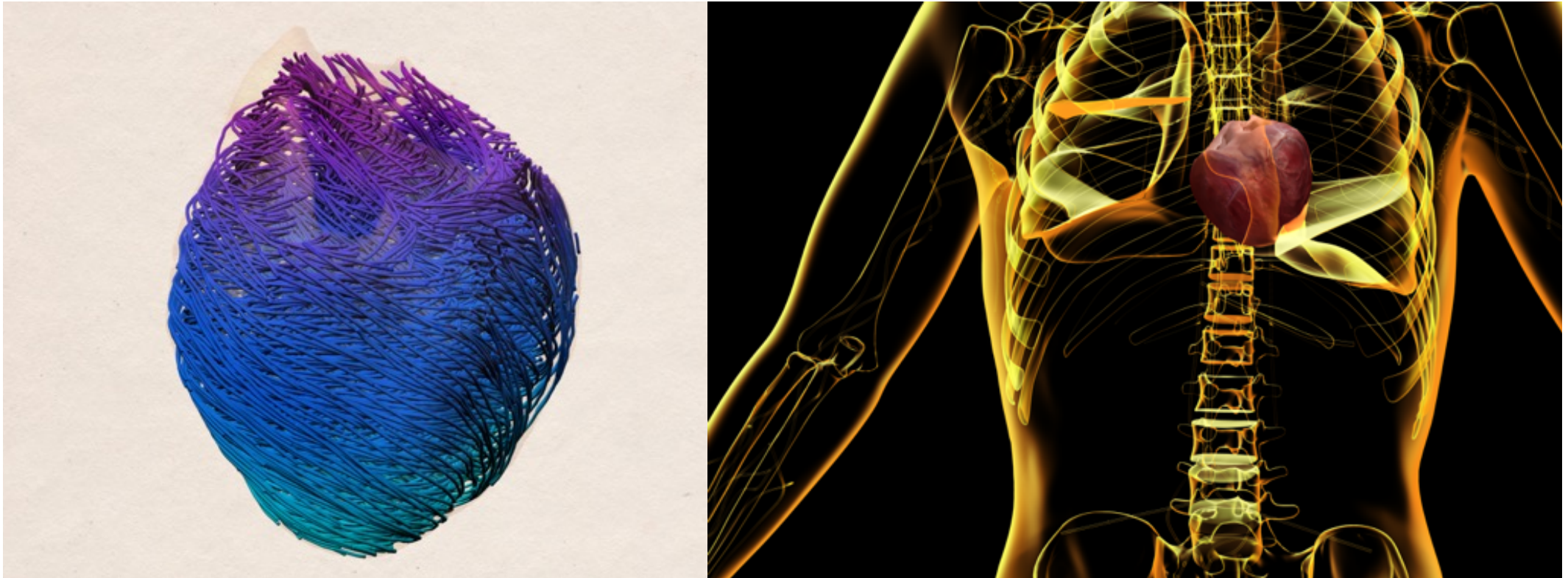
Tephra dispersal for each phase of the CI eruption

Simulation results for the tephra dispersal indicated that the eruption began with a short, high-intensity Plinian explosive phase (brown), followed by a longer co-ignimbrite phase (blue). The volume associated to the co-ignimbrite phase accounted for 75% of the total fallout volume (red).



An interactive web site to learn about the simulations of the Campanian Ignimbrite supervolcano

Alya Red: A Computational Heart



Winner of the 2012 International
Science Visualization challenge
promoted by the National Science
Foundation and the Science journal



<https://youtu.be/tKD2hfF27rM>



Speed (m/s)



SIMULADOS

A true (hi)story

A documentary about a prehistoric virtual family trying to survive in a moody simulated environment.

© Scientific Visualization Group, Barcelona Supercomputing Center 2015

